



duchy view

LAUNCESTON | NORTH CORNWALL

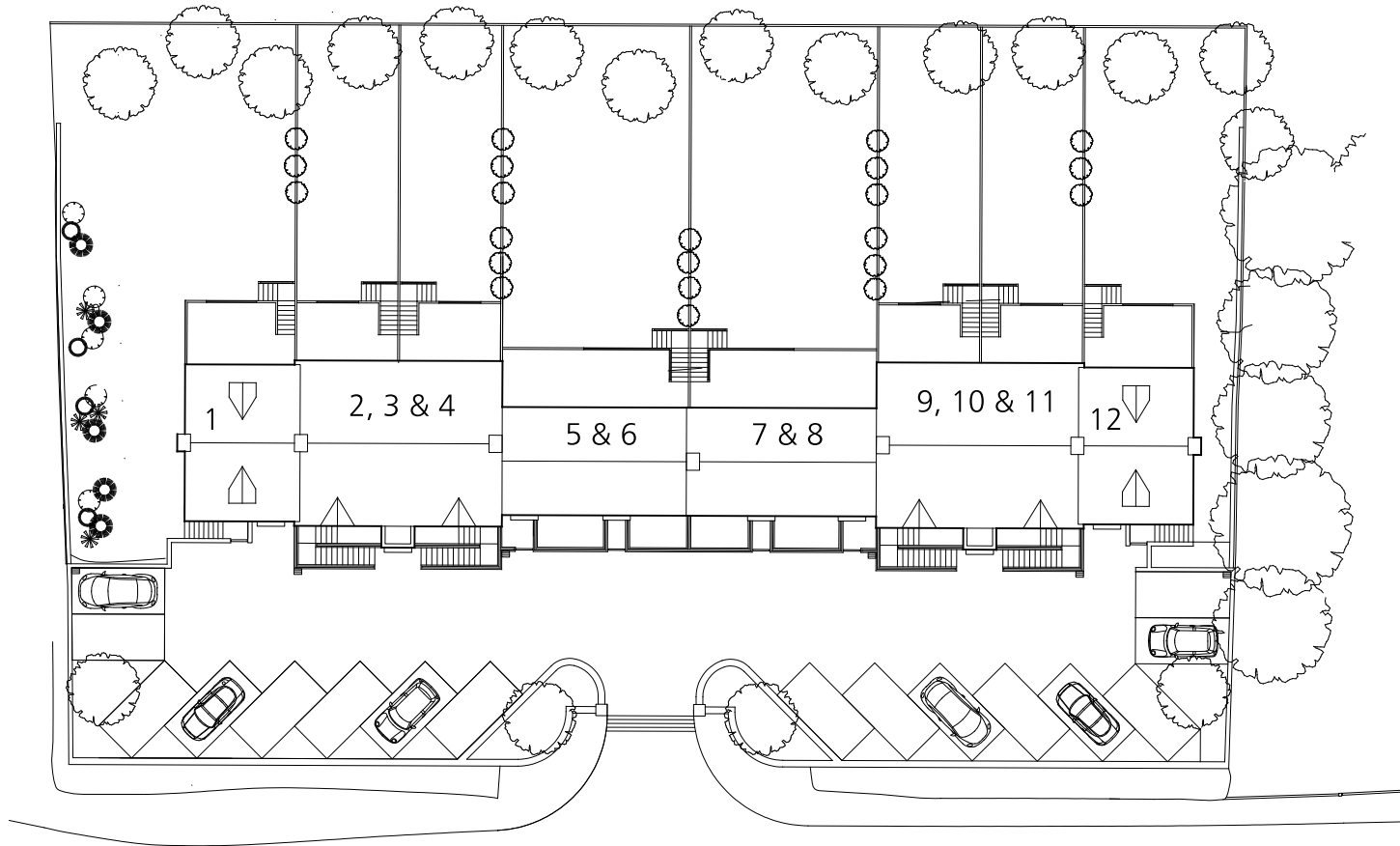
A UNIQUE DEVELOPMENT OF
12 HOMES CONSISTING OF:
*1 and 2 bedroom flats, 2 and 3 bedroom
maisonettes, and 3 bedroom houses*

Site layout, floor plans and development location

KINGDON
H O M E S



duchy view



WESTERN ROAD

**KINGDON
H O M E S**

*for further information on this
development and others please call*

01566 779170

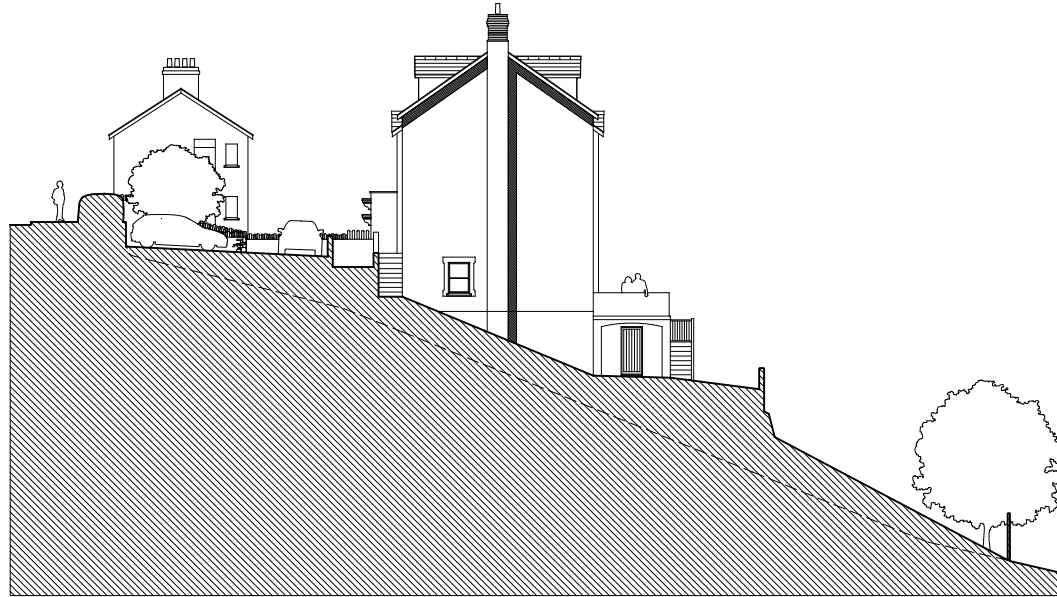
or visit our website

www.kingdonhomes.co.uk



12 | 9-11 | 7-8 | 5-6 | 2-4 | 1

NORTH WEST elevation



NORTH EAST elevation



duchy view

**KINGDON
H O M E S**

*for further information on this
development and others please call*

01566 779170

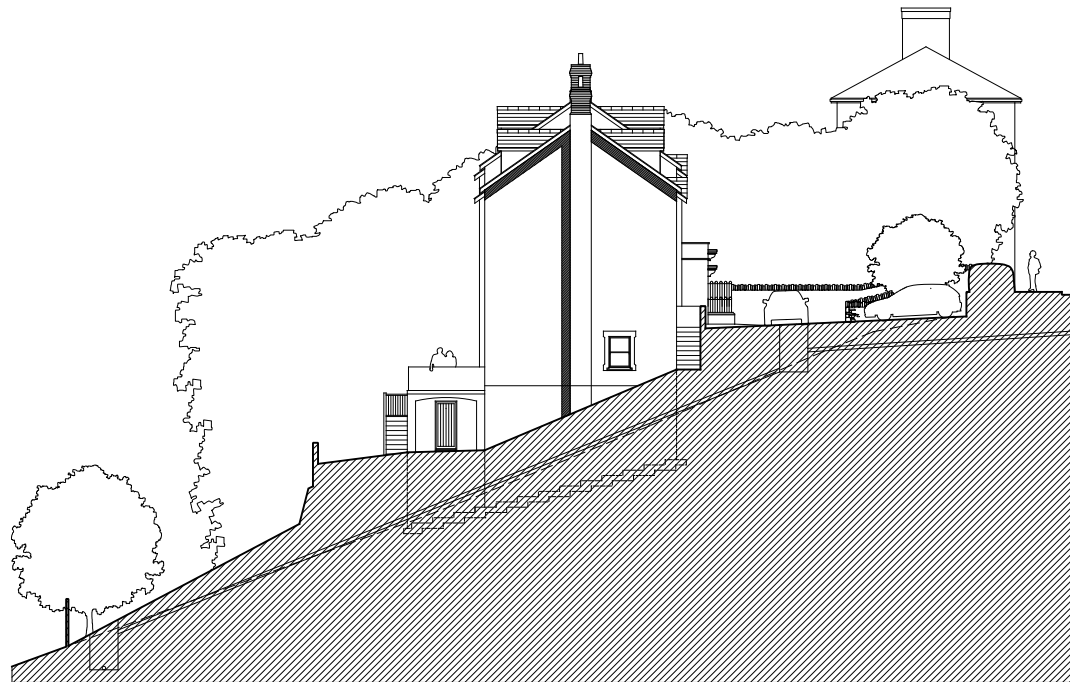
or visit our website

www.kingdonhomes.co.uk



1 2-4 5-6 7-8 9-11 12

SOUTH EAST elevation



SOUTH WEST elevation



duchy view

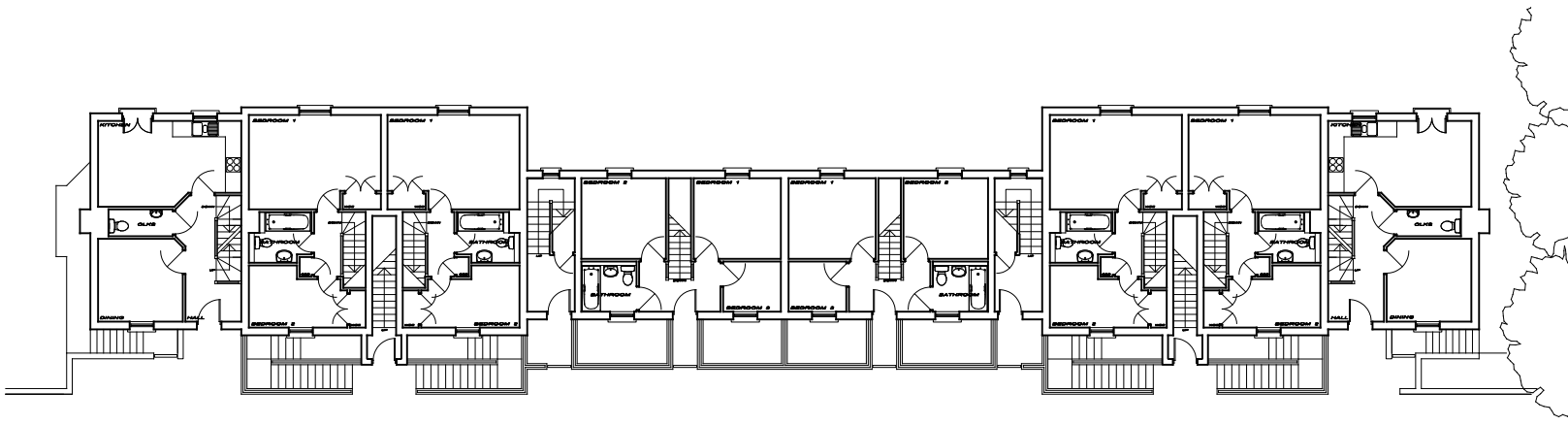
**KINGDON
H O M E S**

*for further information on this
development and others please call*

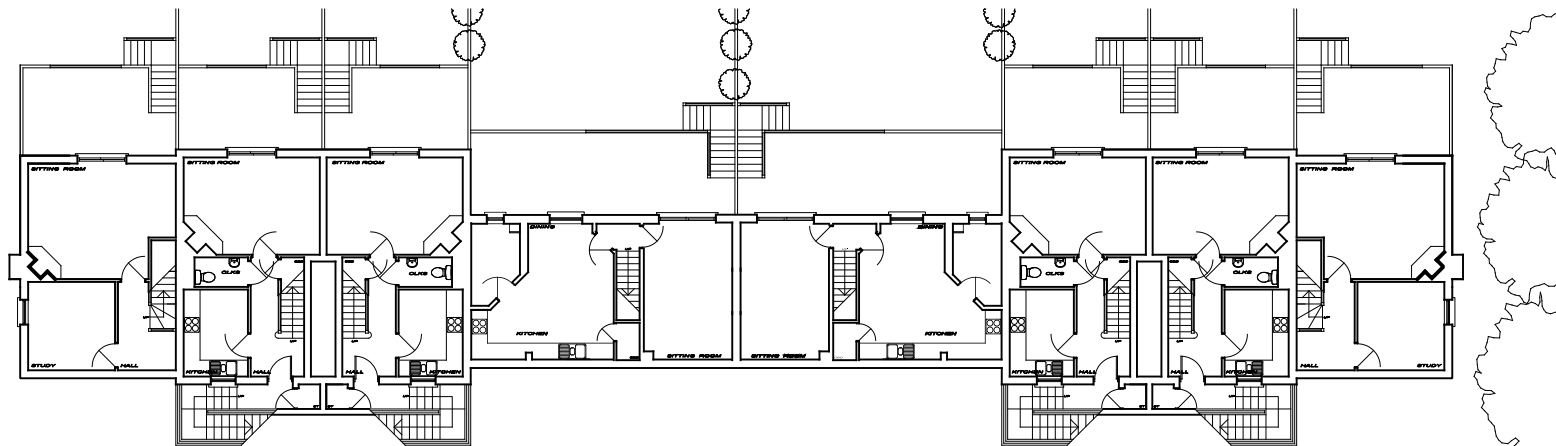
01566 779170

or visit our website

www.kingdonhomes.co.uk



GROUND FLOOR layout



LOWER GROUND FLOOR layout



duchy view

**KINGDON
H O M E S**

for further information on this
development and others please call

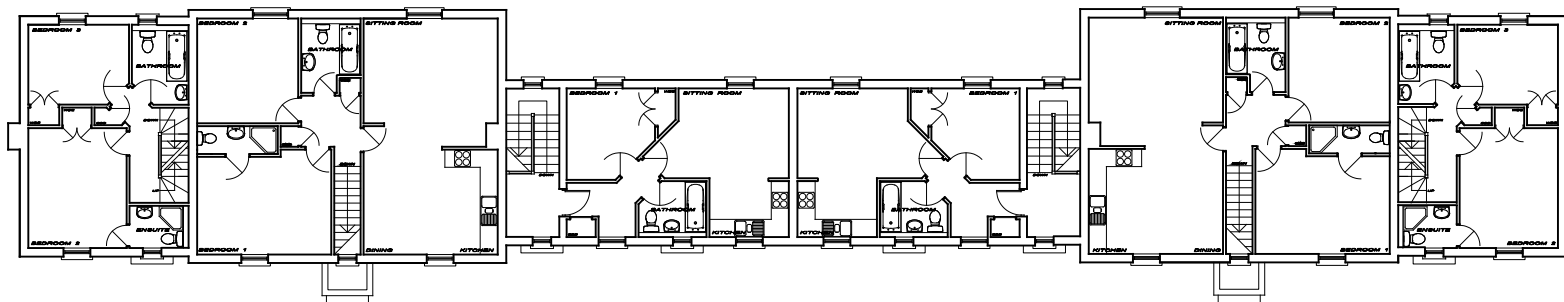
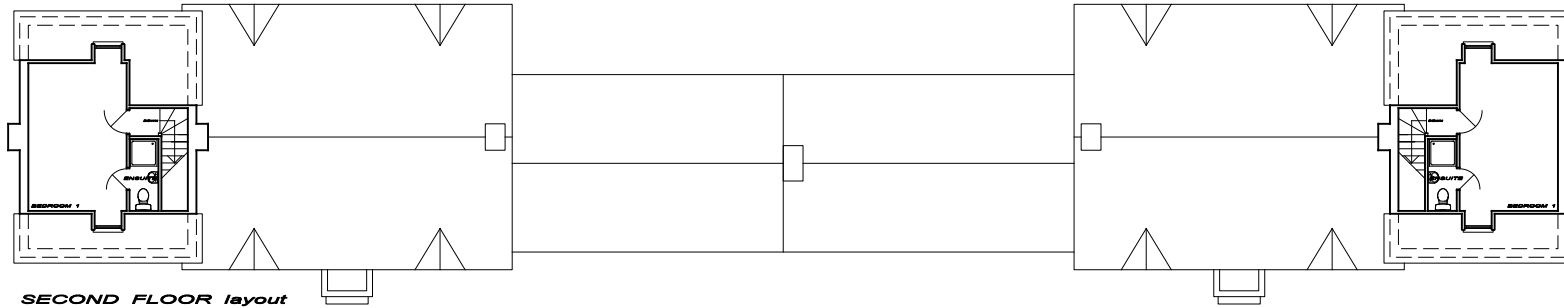
01566 779170

or visit our website

www.kingdonhomes.co.uk



duchy view



**KINGDON
H O M E S**

*for further information on this
development and others please call*

01566 779170

or visit our website

www.kingdonhomes.co.uk



Duchy View is situated on the valley side so benefiting from spectacular views across the rolling North Cornwall countryside.

**KINGDON
H O M E S**

*for further information on this
development and others please call*

01566 779170

or visit our website

www.kingdonhomes.co.uk

the development

Duchy View is situated on Western Road in Launceston. This select development of 12 homes consisting of one and two bedroom flats, two and three bedroom maisonettes and three bedroom houses all benefit from fabulous rural views along the valley. Yet, they are only a short level walk to the bustling town centre of Launceston.

launceston

Launceston sits astride the A30 one mile from the Devon/ Cornwall border, in an area of considerable beauty and charm with easy access to both North and South Coasts as well as to the cities of Exeter, Plymouth and Truro.

In Launceston, the Norman castle atop the hill dominates the surrounding landscape, and its Georgian houses, intricately carved church, narrow streets and market square make it a delightful rural town.

Launceston has a population in the region of 8,000 and offers a wide range of shops, restaurants and boutiques located in and around the Town Square. There are many sporting facilities nearby including a fully equipped leisure centre, two 18 hole golf courses and numerous sports and social clubs.

Few locations can be better placed to enjoy the varied range of activities available in Devon and Cornwall. From walking, cycling and watersports at Roadford Lake on the edge of Dartmoor to surfing on the North C



duchy view

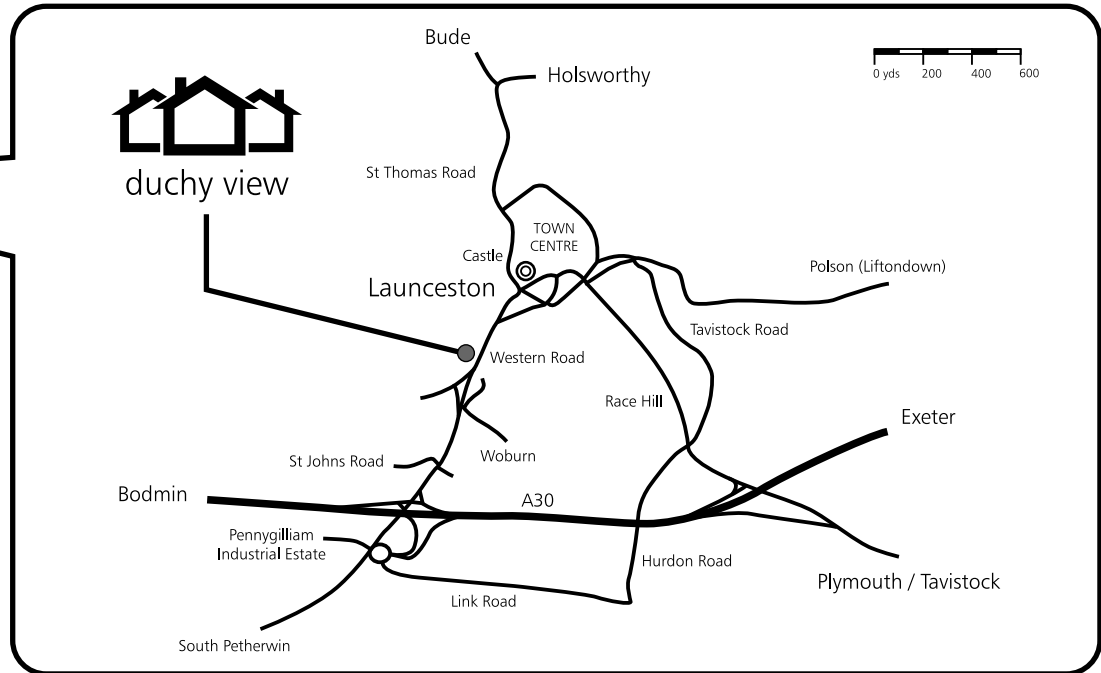
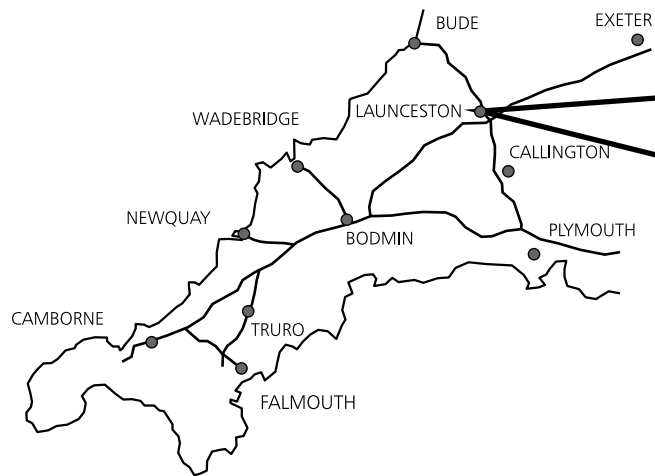
KINGDON
H O M E S

*for further information on this
development and others please call*

01566 779170

or visit our website

www.kingdonhomes.co.uk



contact

developer:

Kingdon Homes, The Barns, Lower Bamham, Polson, Launceston, Cornwall, PL15 9QT

Telephone: 01566 779170

Web: www.kingdonhomes.co.uk

Email: kingdonhomes@btinternet.com

sole agent:

Telephone: 0845 618 5945

Website: www.rightmove.co.uk

